

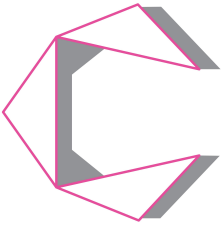
# 2016

## Annual Report



# CONTENTS

Message from Founder	2
Mission & Programs	3
Programs Impact	4
Shelter Geography	5
Financials	6
Highlights	7
Looking Forward	7
We Need Your Help	8
Donors	9-10



**Founder & President**

Tina Hovsepian, AIA

**Board Chair**

Alex Yarijanian

**Finance Chair**

Udit Sekhri

**Advisors**

Rajeev Kapur

Erik Mar

Peter Samuelson

Dear Supporters and Friends,

We need not delve into in-depth research on homelessness, natural disaster occurrences, or the statistics of the refugee crisis to realize there is a need in the world – a need for more compassion for others, wisdom on how to help, and courage to implement these ideas. Personally, I have constantly contemplated how architecture and design can help to make an impact and improve the lives of transient communities both locally and globally. This is why I designed and invented the temporary transitional shelter solution that provides instant space with no assembly required, Cardborigami. Since our inception in 2010, Cardborigami has aimed to refine our portable shelter solution as well as our holistic programs that are designed to address issues beyond the basic need for shelter and privacy through partnerships with other organizations.



This past year, we were able to continue our Nepal earthquake relief efforts from 2015, by helping to rebuild roads, schools and homes at the base of the Himalayas. This aligns with our efforts to support longer-term solutions for relief. In addition, we collaborated with the Boy Scouts of America to raise funds for the manufacture of 150 water-resistant Cardborigami shelters, 50 of which were assembled by scouts and affiliated youth.

Thanks to supporters like you who make the work we do with Cardborigami possible, I am proud to report that I was nominated and recognized as a humanitarian award recipient, along with 5 other young social entrepreneurs, by the Muhammad Ali Center. This exposure continues to expand our platform to raise awareness of our mission to provide instant space to protect people from the elements through innovation and design, our vision to restore dignity through shelter as a leading transitional shelter provider globally, and our goals to collaborate with other organizations and implement our programs.

As you review our report, please keep in mind that we are still a 100% volunteer-run organization, utilizing all of our funding towards programs and production of shelters. It is my sincere hope that with your continued support and contributions, Cardborigami will scale up, hire staff, increase the efficiency of our shelter manufacturing process, and expand the reach of our programs in order to meet the high demand that currently exists for our unique transitional shelter solution.

Never Give Up and Cheers,

Tina Hovsepian, AIA

## Mission

Cardborigami's mission is to provide instant space to protect people from the elements through innovation and design.

## Programs

### #COVERNEPAL



On April 25th, 2015, Nepal was hit by a devastating earthquake. Cardborigami partnered with local aid organizations to provide Cardborigami shelters in the aftermath, and helped rebuild infrastructure, including a school, in remote villages nearest to the epicenter in Gorkha. We raised funds to purchase materials needed, and Board members and volunteers personally delivered the materials and assisted with rebuilding efforts in the field, which continued in 2016.

### Local Shelter Production by Youth

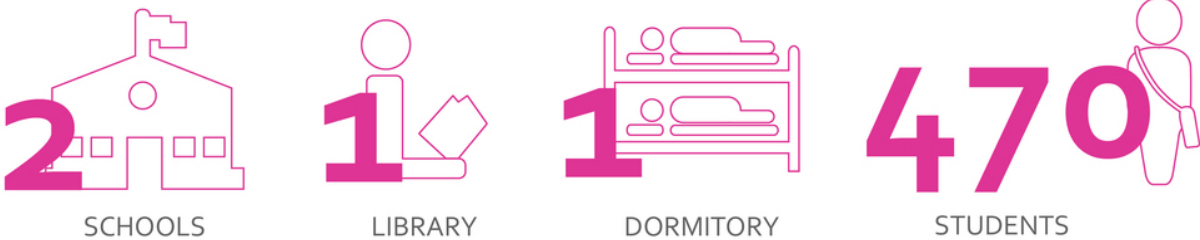
In September 2016, Cardborigami embarked on a special shelter production and fundraising project with Boy Scout Troop 691 in Orange County, CA, whereby over 20 scouts and other youth were trained on assembly and worked together to produce water-resistant shelters. This months-long effort was coordinated by scout Shaan Kapur as part of his Eagle Project.



# Programs Impact

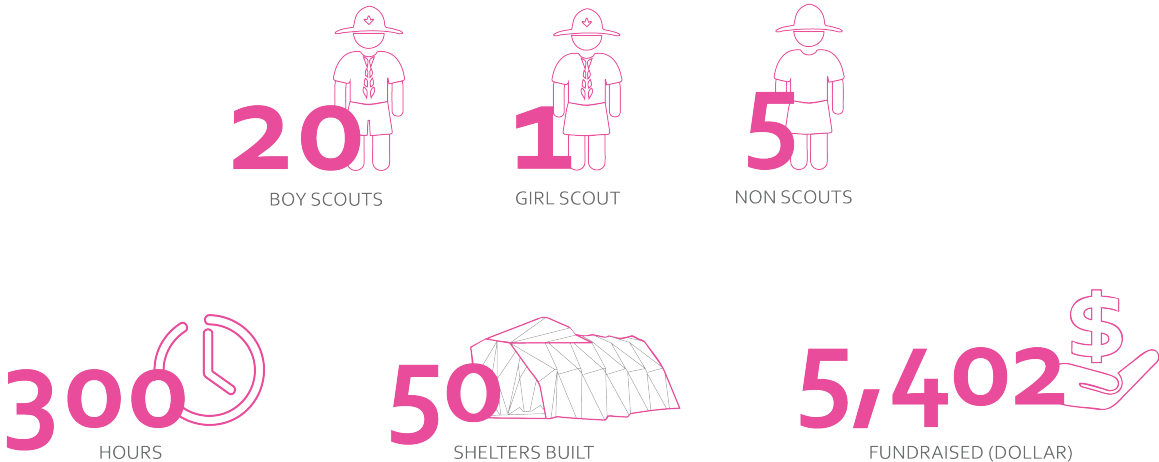
## #COVERNEPAL

In January 2016, Cardborigami board members and volunteers traveled to Nepal to complete delivery of funds and materials raised for the earthquake relief effort. In total, we established wireless Internet connection for an entire village, built 2 schools, 1 library, 1 dormitory, 1 home, and provided school supplies and warm clothing to over 470 students.



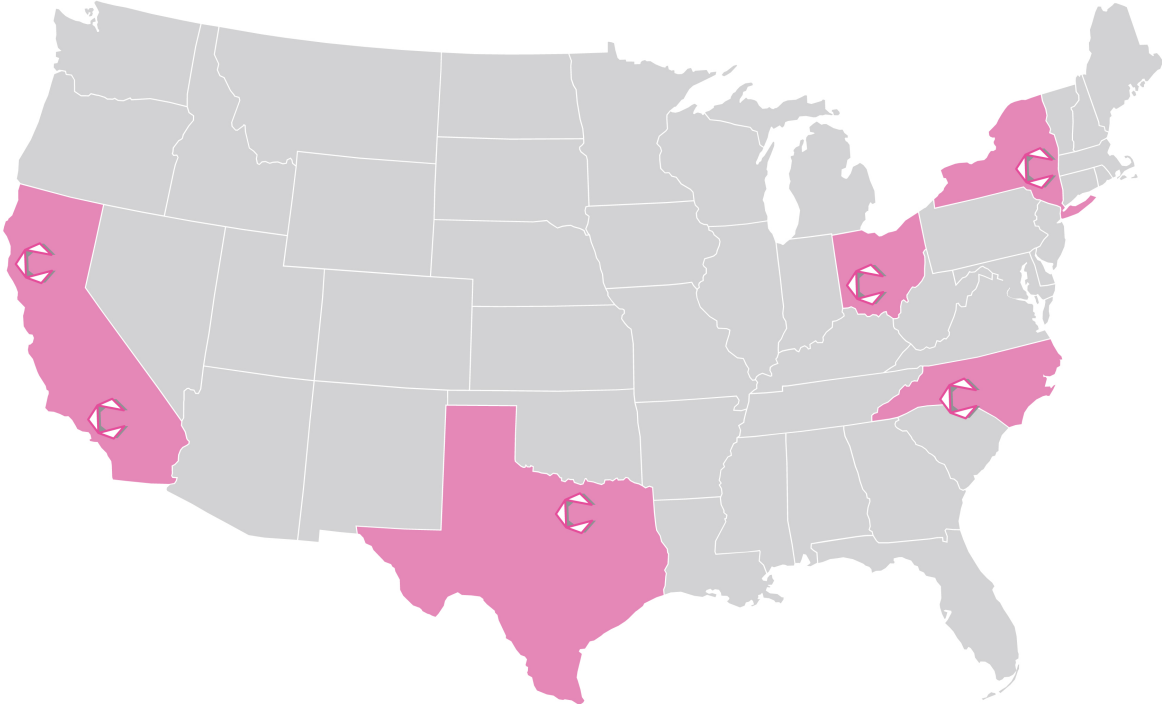
## Local Shelter Production by Youth

Boy Scout Troop 691 activated 20 Boy Scouts, 1 Girl Scout, plus 5 other non-scouts who logged approximately 300 hours to complete 50 shelters for the lead scout's Eagle Project. The Troop fundraised a total of \$5,402, which covered the purchase of supplies for up to 150 shelters.

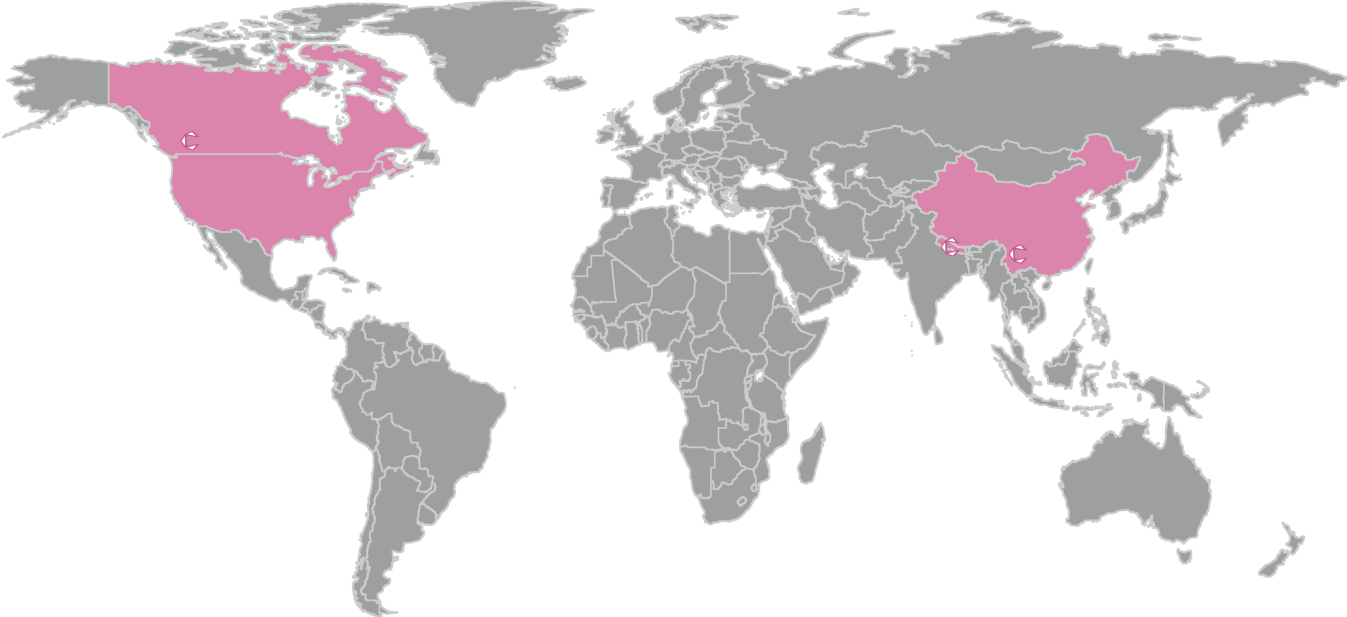


# Shelter Geography

Cardborigami shelters are in general use by our U.S. supporters in the following locations:



Internationally, our shelters are in use following the 2015 earthquake in Nepal and by international supporters in the following locations:



# Financials

## Revenue and Expenses

Fiscal Year 2016

Source: Self-reported by organization

### Revenue

Contributions, Grants, Gifts	\$26,719
Program Services	\$0
Special Events	\$46,621
Other Revenue	\$244
<b>Total Revenue</b>	<b>\$73,584</b>

### Expenses

Program Services	\$5,703
Administration	\$44,399
Fundraising	\$3,333
Payments to Affiliates	\$0
Other Expenses	\$252
<b>Total Expenses</b>	<b>\$53,687</b>

## Balance Sheet

Fiscal Year 2016

Source: Self-reported by organization

### Assets

<b>Total Assets</b>	<b>\$79,840</b>
---------------------	-----------------

### Liabilities

<b>Total Liabilities</b>	<b>\$4,416</b>
--------------------------	----------------

### Fund Balance (EOY)

<b>Net Assets</b>	<b>\$75,424</b>
-------------------	-----------------

## 2016 Highlights

Cardborigami received recognition and notable corporate support from the following sources:

### Awards

- **Muhammad Ali Humanitarian Awards:** Tina Hovsepian received the Respect award as 1 of 6 Thirty Years of Age or Younger Core Principle Awards Recipients – *September 17*

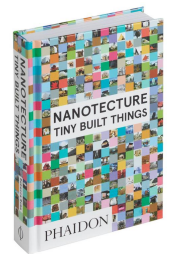


### Major speaking engagements

- **AIA | LA event:** Tina spoke at “Design for Dignity: Changing The Housing Equation By Design” – *May 6*
- **Dwell on Design:** Tina presented as a Toyota-sponsored Mother of Invention – *June 25*

### Publications

- **Nanotecture: Tiny Built Things:** Cardborigami featured in hardback book by Rebecca Roke, published by Phaidon - *2016*
- **HGTV Magazine:** Tina featured with Cardborigami as one of the “Inventionaries” in two-page Toyota Spread, published by Hearst – *May 2016*
- **Food Network Magazine:** Tina featured with Cardborigami as one of the “Inventionaries” in two-page Toyota Spread, published by Hearst – *May 2016*



### Media

- **Elle Décor:** Tina & Derek Powell discuss how Cardborigami is changing lives – *April 5*
- **Creating Good Work, Live:** Ron Schultz radio interview with Tina & Alex – *October 27*
- **ABC News Live:** Interview with Tina discussing Muhammad Ali Award – *September 14*

### Fundraising Events

- **Annual fundraiser:** held at Pinky’s Iron Doors showroom (\$4,033) – *November 5*
- **Los Angeles Soup:** winner of quarterly micro-funding pitch (\$450) – *November 16*

### Major In-Kind Support

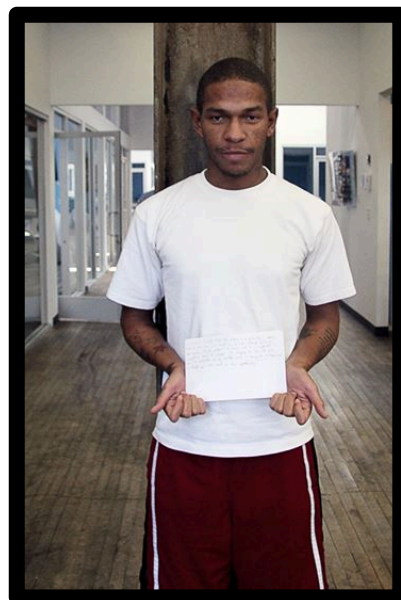
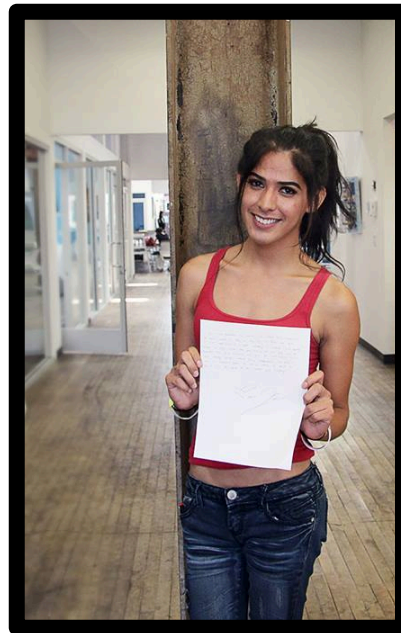
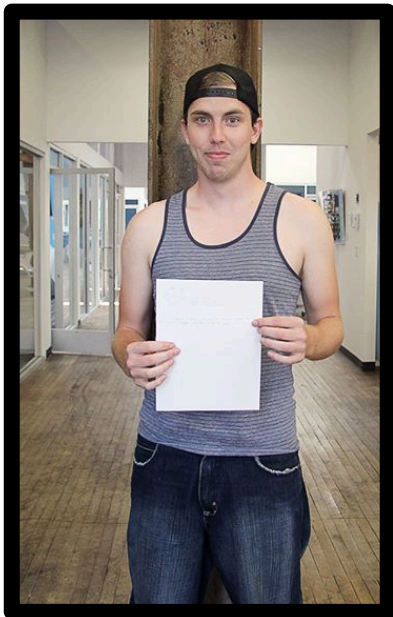
- **Toyota:** donation of a 2016 Tundra SR5 V8 truck





## Looking Forward

In 2017, Cardborigami will aim to initiate its #TRANSITIONME program to provide immediate shelter as the first step in homeless aid in greater Los Angeles as well as potentially other US urban areas. This program will involve heavy partnership and collaboration with existing homeless aid organizations that have established multi-step transitional programming geared towards permanent housing placement and employment. Furthermore, as a related activity, we will work with future partners on sustainably incorporating our #YOUTHLOYMENT program into their services, which we piloted in 2015.



## We Need Your Help

Individual donations continue to be the lifeblood of our organization, and we would not be able to further our mission without your critical financial support.

### Your Contribution Matters!

#### DIRECT DONATIONS

Please consider donating to support our operations and programs-building capability via our website.



#### CORPORATE EMPLOYEE GIFT MATCHING

Additionally, if your employer offers a corporate matching program for employees' charitable giving, we encourage you to utilize that process to increase the effect of your contribution. We can assist in connecting your company to several third-party matching processors / options if a system is needed.

#### IN-KIND DONATIONS

To discuss in-kind donations of professional services or products, you may reach us at anytime at [info@cardborigami.org](mailto:info@cardborigami.org).

#### AMAZON SMILE

If you shop on Amazon, please consider designating us as your charity of choice so that we may receive a small percentage of every purchase amount spent. Go to <https://smile.amazon.com> to set this up and connect Cardborigami as your charity.

#### VOLUNTEER

If you are interested in volunteering for either short- or longer-term needs of our organization, we are always looking for dependable and committed folks to help out – please reach us at [info@cardborigami.org](mailto:info@cardborigami.org).

## Special Acknowledgment

We would like to acknowledge our 2016 fiscal sponsorship of the Clare Fischer Family Trust, which stated purpose includes improving the quality of life for people across the globe through teaching about and elevating the art and science of hearing.

## Thank You to All of Our Donors

We would like to express our sincere appreciation to all of our 2016 donors:

Above \$500	\$101 - \$500	\$51 - \$100	\$50 and Below
Bryan Bethem	Victoria Barrick	Caroline Abrahamyan	Arsineh Aghakhani
Google	Fandra Chang	Leslie Adams	Savana Aghamal
Tina Hovsepian	Baizhu Chen	Katheryn Allen	Eduardo Alvarado
Samuel Rotter	Jacqui Cikra	Phil Azelton	Paul Atkinson
Tony Safoian	Michael Harmon	Sonia Baltodano	Richard Berg
Udit Sekhri	Martha Henry	Devon Barnes	Dana Brittan
Alex Yarijanian	Keith Horn	Meighan Berberich	Kelly Buehler
	Krishan Joshi	Susan Bernardo	Vishal Chitkara
	Sujata Kamdar	Ellie Campbell	Neil Chitkara
	Raj Kapur	Michael Chen	Zoe Cress
	Rajeev Kapur	Michael Cochran	Steven Crofts
	Rajat Khurana	Steven Crofts	Laura Dickinson
	Cherie Michaelson	Barb Darragh	Beverly Gaudin
	Michael Rafter	Sona Gala	Monica Horino
	Surinder Saini	Megan Hanson	Monica Joshi
	Sona Shah	Andrew Harris	Brian Kendrella
	Adetokunbo Shoyoye	Michael Joe	Cynthia Klingelfuss
	Leigh Tuntland	Anil Kapur	Shani Kochav
		Jeffrey Klein	Victoria Lorenzo
		Shelly Kohli	Sara Loy
		Goldy Lee	Erik Mar
		Erik Lindgren	Ashley Margo
		Michael Morhaime	Tracey Mccarter
		Gaurav Nanda	Gordon Mcneill
		Mohan Narwani	Jordania Moore
		Mark Pinkman	Darriane Okada
		Keith Reynolds	Jim Olcken
		Narinder Saini	Pfeiffer Partners
		Manish Saini	Tessa Pobanz
		C Sayadian	Joshua Reitz
		Lisa Schultz	Jesse Reyes
		Divya Sharma	Paul Salazar Jr
		Natalie Tat	James Sarratori
		Michael Valenti	Anthony Shutts
		Puja Wadhawan	Punam Sirasky
		Stefanie Waterfield	Roxana Soltani
			Natalie Tat
			Jalpa Trikanad
			Rishi Vohra
			Ladonna Wallace
			Doug White
			Katherine Wider
			Song-Hee You
			Anne Zimmerman

# 2016

## Annual Report



**Connect With Us!**



(424) 256-8397 | [info@cardborigami.org](mailto:info@cardborigami.org)